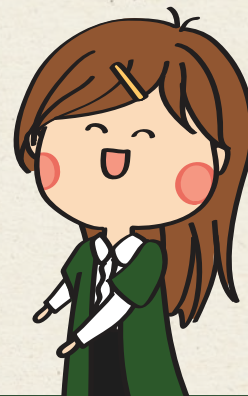
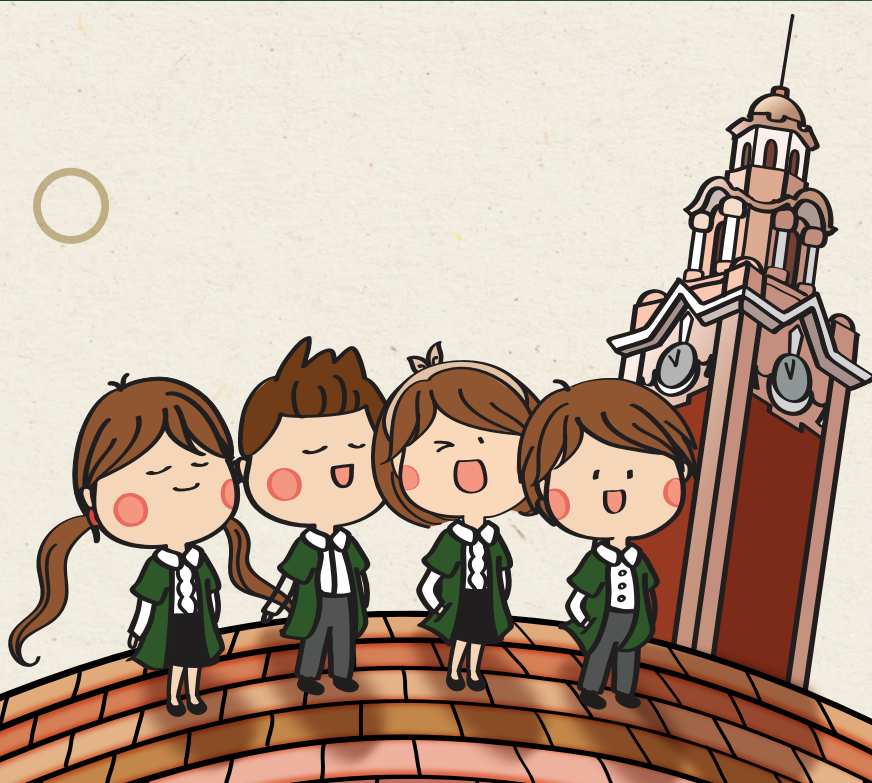




香港大學
THE UNIVERSITY OF HONG KONG



HKU Guided Tour Instruction



By registering to the Guided Tour of The University of Hong Kong (HKU Guided Tour), you agree to the following:

Manner

1

Each guided tour lasts approximately 90 minutes.

2

Please arrive the assembly point 10 minutes before the start time. The tour will start sharp at the start time, latecomers will not be admitted to the Tour.

3

Successful applicants will receive a confirmation email. Please present the email for admission and Guided Tour registration on the date of visit.

4

To protect personal privacy, no filming or recording is allowed during a tour without our prior written consent.

5

Participants are responsible for maintaining their safety at all times and agree to follow the safety instructions given by us and to exercise due care and attention during the tours. None of us, our employees or our students shall accept any liabilities or responsibilities in the event of illness, injury, death or loss or damage to personal properties of participants during the tours.

6

Each tour group has a maximum capacity and is subject to availability. The University of Hong Kong reserves the right to make the final decision.

Bookings, Cancellations & Bad Weather Arrangement

7

The Booking made is non-changeable.

8

The Booking Fee is non-refundable.

9

The tour will be automatically cancelled in the event a Tropical Cyclone Signal No. 8 or above, or a Red or Black Rainstorm Warning Signal, or an extreme weather condition, is issued, within 3 hours prior to the scheduled start time of the tour. For instance, if the Typhoon Signal No.8 is hoisted at 11:00am, the guided tour at 2:00pm will be cancelled.

10

For any cancellation made by us, you shall receive a full refund of the monies paid to us but shall not be entitled to any further sum by way of compensation, damages or otherwise arising from said cancellation.



Whether you're interested in learning more about the oldest university in Hong Kong or a prospective student, the HKU Guided Tour is the perfect opportunity to discover all that HKU has to offer. Book your tour today!



Introducing declared monuments on HKU Main Campus

(Main Building, Hung Hing Ying Building, Fung Ping Shan Building, Tang Chi Ngong Building and the Old Halls: May Hall and Eliot Hall)

Discover the unpublic area, such as Loke Yew Hall and its balcony
(subject to actual availability of the venues)

Get an insider's perspective on campus life and academic opportunities
from our student Green Gown Guides

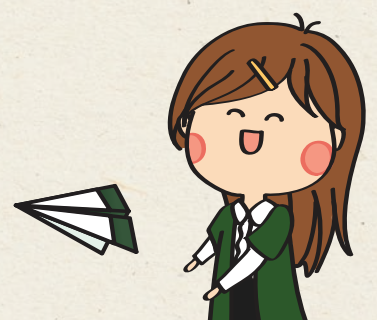
Time: 14:00-15:30 / 16:00-17:30 (New duration with updated content: 90 minutes (approx.))

Assembly Point: HKU Check-in Point (near Exit A1, HKU MTR Station)

*Please arrive 10 minutes prior to the scheduled appointment for registration and roll call.

Dismiss Point: HKU Visitor Centre (near Exit C, HKU MTR Station)

Price: HK\$140 per visitor



October Timetable

Sunday	Monday	Tuesday	Wednesday	Thursday	Friday	Saturday
		1 ● 14:00 Mandarin ● 16:00 Mandarin	2 ● 14:00 Mandarin ● 16:00 Mandarin	3 ● 14:00 Mandarin ● 16:00 Mandarin	4 ● 14:00 Mandarin ● 16:00 English	5 ● 14:00 Mandarin ● 16:00 Cantonese
6 ● 14:00 Mandarin ● 16:00 Cantonese	7 ● 14:00 Mandarin ● 16:00 English	8	9	10	11	12
13	14	15	16	17	18	19
20	21	22 ● 14:00 English	23	24	25 ● 14:00 Mandarin	26 ● 14:00 Cantonese
27	28	29 ● 14:00 Cantonese	30	31		

November Timetable

Sunday	Monday	Tuesday	Wednesday	Thursday	Friday	Saturday
					1 ● 14:00 English	2 ● 14:00 Mandarin
3	4	5 ● 14:00 Mandarin	6	7	8 ● 14:00 Cantonese	9 ● 14:00 English
10	11	12 ● 14:00 English	13	14	15 ● 14:00 Mandarin	16 ● 14:00 Cantonese
17	18	19 ● 14:00 Cantonese	20	21	22 ● 14:00 English	23 ● 14:00 Mandarin
24	25	26 ● 14:00 Mandarin	27	28	29 ● 14:00 Cantonese	30 ● 14:00 English

Guided Tour Route



法定古蹟 Declared Monuments

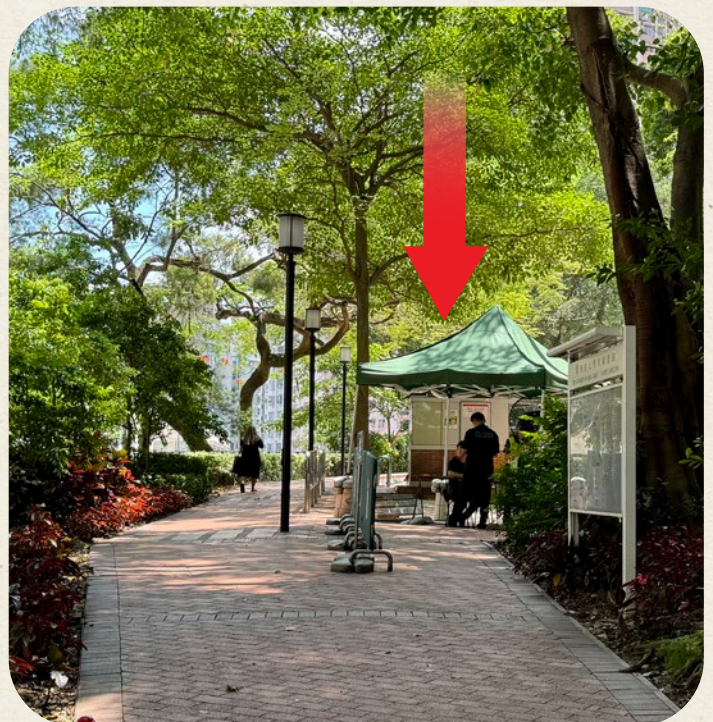
- ① 本部大樓 Main Building
- ② 儀禮堂 ③ 梅堂 Eliot Hall and May Hall
- ④ 孔慶熒樓 Hung Hing Ying Building
- ⑤ 鄧志昂樓 Tang Chi Ngong Building
- ⑥ 馮平山樓 Fung Ping Shan Building
- ⑦ 大學堂 University Hall
(薄扶林道144號 144 Pokfulam Road)

西環濾水廠 (歷史建築) West Point Filters (Historic Buildings)

- Ⓐ 平房 Bungalow
- Ⓑ 職員宿舍 Ⓒ 工人宿舍 Workmen's Quarters
- 西區抽水站及濾水廠 Elliot Pumping Station and Filters
- Ⓓ 工人宿舍 Workmen's Quarters
(香港大學訪客中心 HKU Visitor Centre)
- Ⓔ 高級職員宿舍 Senior Staff Quarters
(逸夫苑 Run Run Shaw Heritage House)
- Ⓕ 濾水廠房 Treatment Works Building



Exit A1, HKU MTR Station



Assembly point: HKU Check-in Point